

# Outer Dowsing Offshore Wind

## Environmental Statement

### Chapter 16 Aviation, Radar, Military and Communication

### Volume 2 Figures

Date: March 2024

Document Reference: 6.12.16

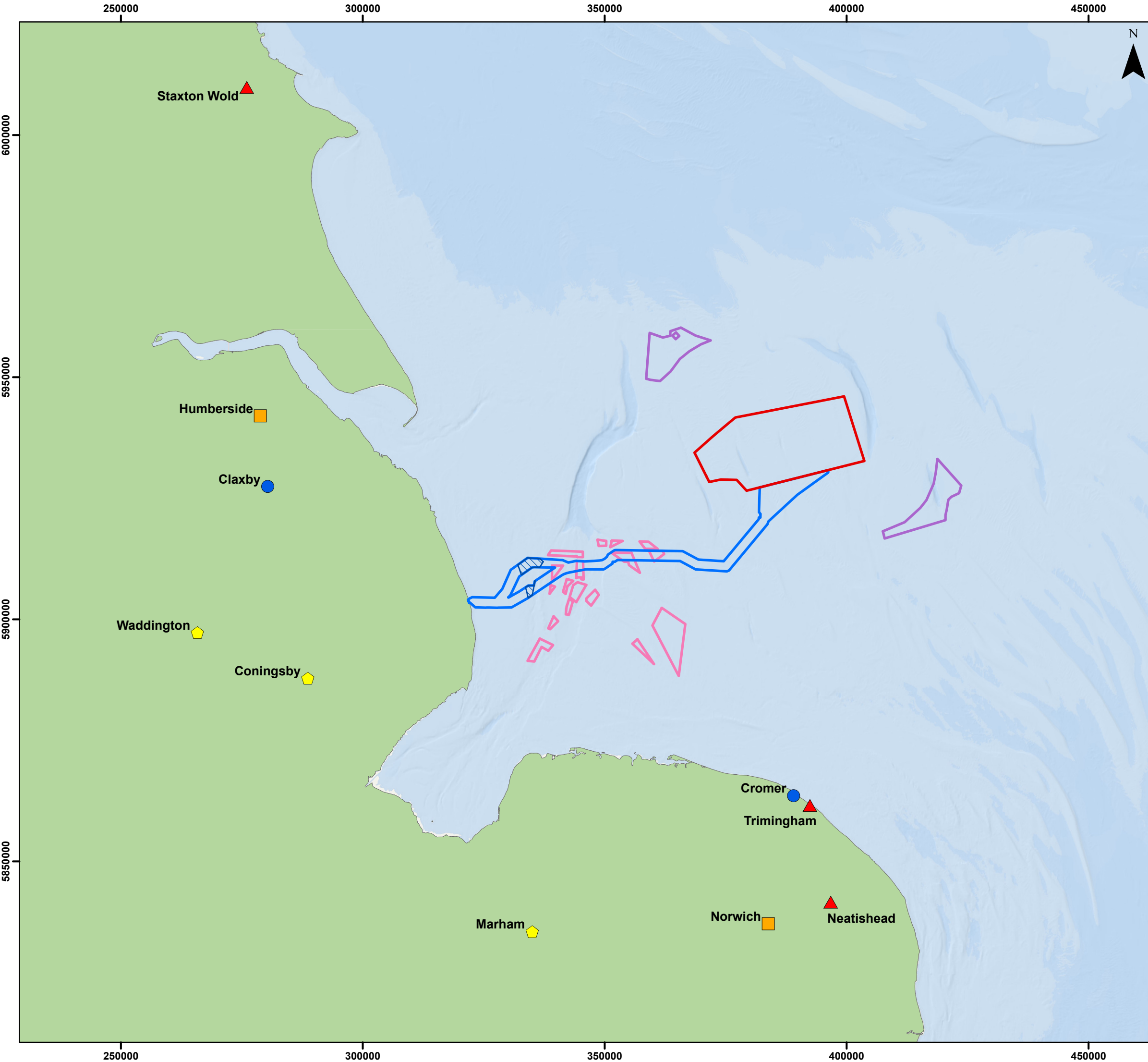
Pursuant to APFP Regulation: 5(2)(a)



Company:	<b>Outer Dowsing Offshore Wind</b>	Asset:	<b>Whole Asset</b>			
Project:	<b>Whole Wind Farm</b>	Sub Project/Package:	Whole Asset			
Document Title or Description:	Chapter 16 Aviation, Radar, Military and Communication Figures					
Internal Document Number:	PP1-ODOW-DEV-CS-FIG-0016	3 <sup>rd</sup> Party Doc No (If applicable):	N/A			
Outer Dowsing Offshore Wind accepts no liability for the accuracy or completeness of the information in this document nor for any loss or damage arising from the use of such information.						
Rev No.	Date	Status / Reason for Issue	Author	Checked by	Reviewed by	Approved by
01	March 2024	DCO Application	GoBe	GoBe	Shepherd & Wedderburn	Outer Dowsing

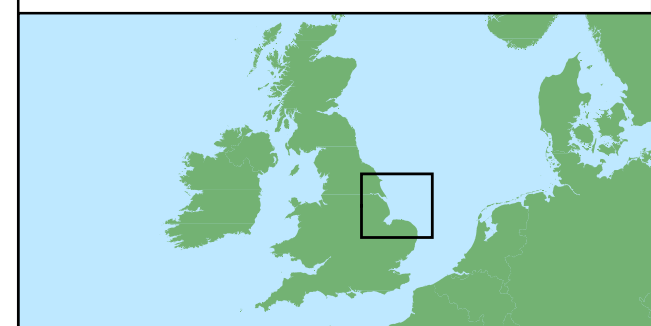
## Table of Figures

- Figure 16.1 Airports and Radars (document reference 6.2.16.1)
- Figure 16.2 Existing Airspace (document reference 6.2.16.2)
- Figure 16.3 HMRI Oil Gas (document reference 6.2.16.3)



**Legend**

- Array Area
- Offshore Export Cable Corridor
- ORCP Area
- Artificial Nesting Structure Area
- Biogenic Reef Restoration Area
- NERL Radars
- ◆ Military Airfields
- Civil Airports
- ▲ Air Defence Radars



Coordinate System: WGS 1984 UTM Zone 31N

0 25 50 km

Scale: 1:750,000

A3 Page Size

Environmental Statement

Airports and Radars within the Study Area

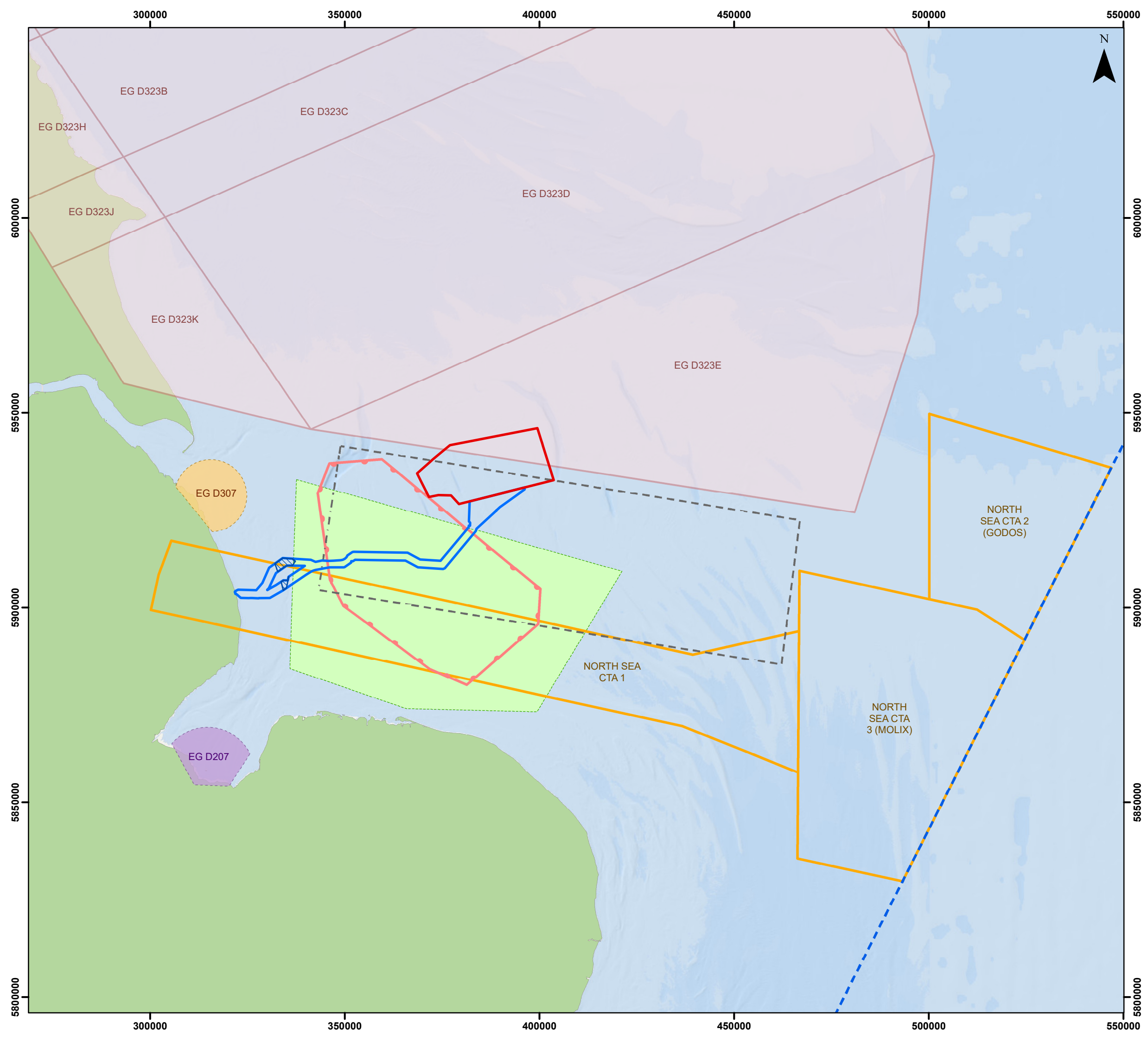
Figure 16.1



Date: 16/02/2024  
 Produced By: BPHB  
 Revision: 0.1

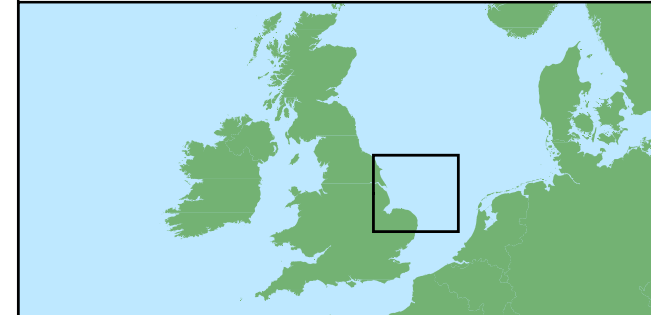
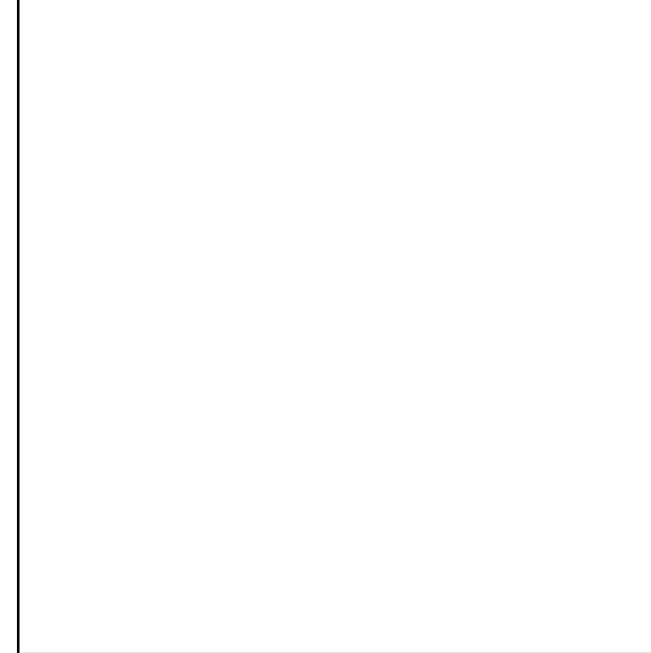
Contains ESRI Basemapping;  
 Esri, Garmin, GEBCO, NOAA  
 NGDC, and other contributors

Document Path: Z:\GIS\GIS - Projects\0152 Outer Dowsing ELA\GIS\Figures\ES\Aviation\ODOW\_0152\_AVI\_Fig16.1\_Airports\_and\_Radars.mxd



**Legend**

- Array Area
- Offshore Export Cable Corridor
- ORCP Area
- London Flight Information Region Boundary
- Air to Air Refuelling Area (AARA) Area 08
- Donna Nook Danger Area
- Greater Wash Transponder Mandatory Zone
- Holbeach Danger Area
- North Sea Control Area (CTA)
- Southern Managed Danger Area
- Wash Aerial Tactics Area (ATA)



Coordinate System: WGS 1984 UTM Zone 31N  
 0 25 50 km  
 Scale: 1:900,000 A3 Page Size

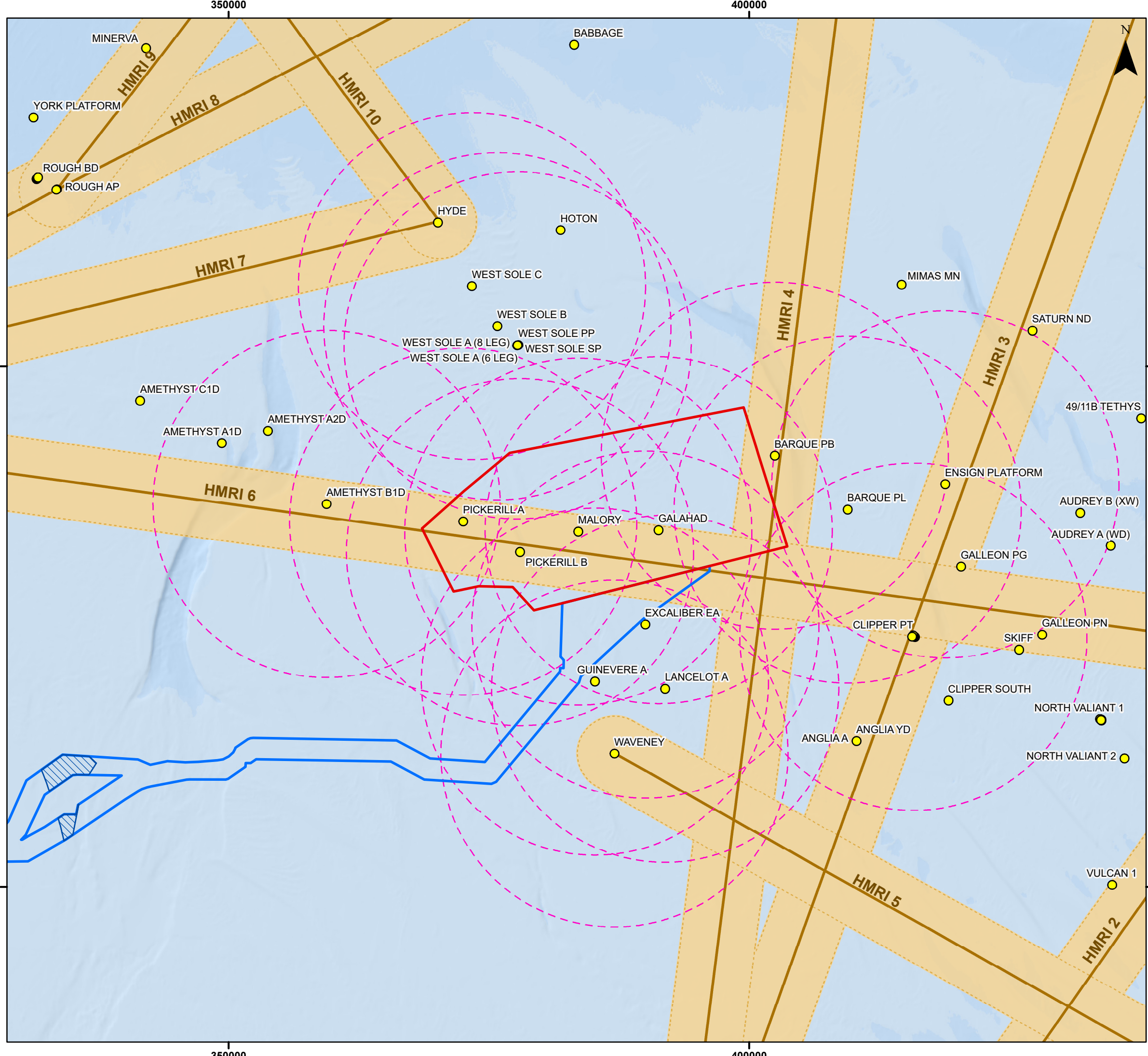
Environmental Statement  
 Existing Airspace Environment  
 Figure 16.2



Date: 16/02/2024  
 Produced By: BPHB  
 Revision: 0.1  
 Contains ESRI Basemapping;  
 Esri, Garmin, GEBCO, NOAA  
 NGDC, and other contributors  
 GoBe

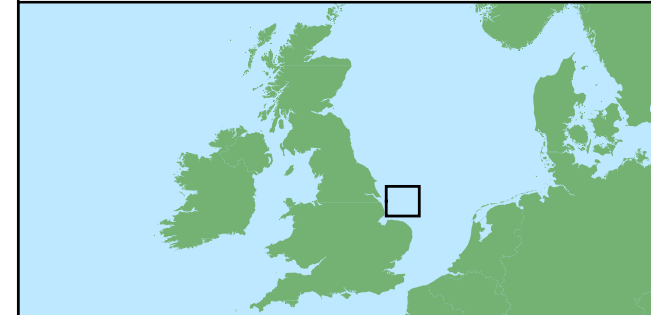
Document Path: Z:\GIS\GIS - Projects\0152 Outer Dowsing EIA\GIS\Figures\ES\Aviation\ODOW\_0152\_AVI\_Fig16.2\_Existing\_Airspace.mxd





### Legend

- Array Area
- Offshore Export Cable Corridor
- ORCP Area
- Oil and Gas Platforms
- Offshore Platforms within 9nm
- Helicopter Main Routing Indicators (HMRIs)
- HMRI 2nm Consultation Buffer



Coordinate System: WGS 1984 UTM Zone 31N  
 0 10 20 km  
 Scale: 1:350,000 A3 Page Size

Environmental Statement  
 HMRIs and Oil and Gas Platforms in the vicinity of ODOW  
 Figure 16.3



Date: 16/02/2024  
 Produced By: BPHB  
 Revision: 0.1

Contains ESRI Basemapping; Esri, Garmin, GEBCO, NOAA NGDC, and other contributors

Document Path: Z:\GIS\GIS - Projects\0152 Outer Dowsing ELA\GIS\Figures\ES\Aviation\ODOW\_0152\_AVI\_Fig16.3\_HMRI\_Oil\_Gas.mxd